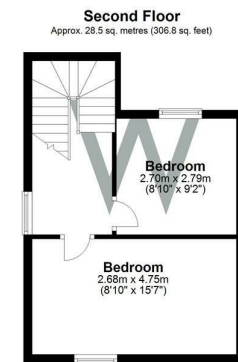
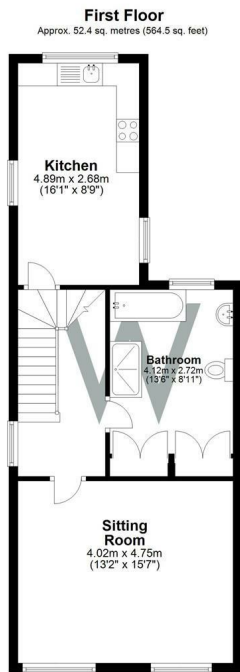




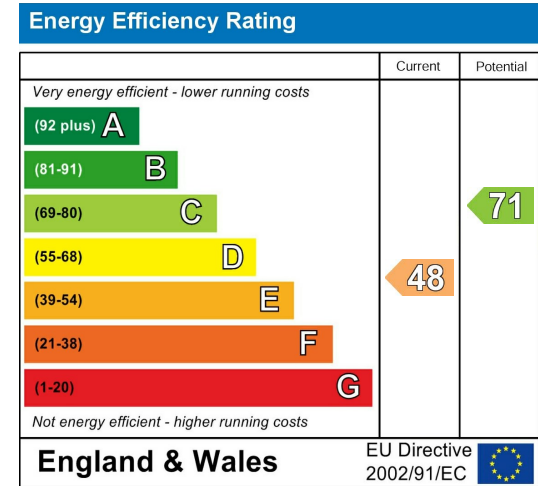
TFF 11 Nelson Road, Salisbury, Wiltshire, SP1 3LT

£900 PCM

A spacious newly redecorated two bedroom flat situated close to the City Centre and within the ring road. Door from street to communal entrance hall to own entrance hall with stairs leading to first floor. Accommodation comprising; sitting room, kitchen with space for washing machine, fridge freezer. New electric oven and hob. Bathroom with built in storage, with shower cubicle and bath, double bedroom and single bedroom. Electric quantum night storage heating permit parking. UNFURNISHED. Sorry no pets.







**WHITES**  
 Castle Chambers, 47 Castle Street,  
 Salisbury, Wiltshire, SP1 3SP  
 01722 336422  
[www.hwwhite.co.uk](http://www.hwwhite.co.uk)  
[residential-sales@hwwhite.co.uk](mailto:residential-sales@hwwhite.co.uk)

